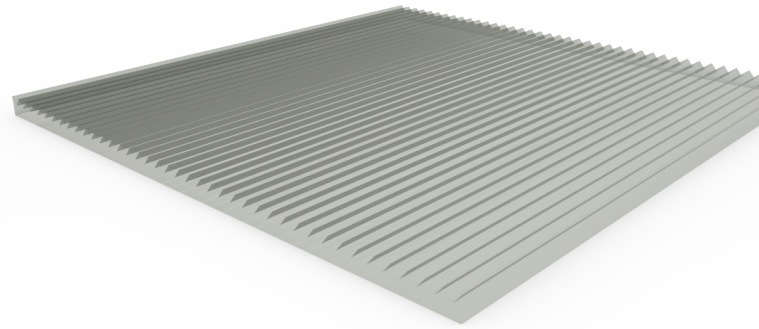
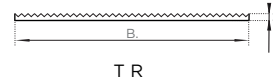


RIBBED COVER
TPU
TYPE RIBBED 



Our coatings and covers can be produced with several materials and can be applied to the timing belts for obtaining specific properties required (higher friction coefficient, higher abrasion resistance, higher oil resistance...).

Material: **PU**
Hardness: **SH 70 A**
Colour: **TRANSPARENT**
Method: **BY EXTRUSION**
Tolerance: **+/- 3 SHA**

CODE	WIDTH MM (B)	THICKNESS MM (TOLERANCE + - 0,3 MM) (H)	WORKING TEMP. °C	FRICTION COEFF.	MIN. PULLEY Ø = THICKNESS	WATER RESISTANCE	ABRASION RESISTANCE	OIL RESISTANCE
910126012771	100	3,5	-20 +80	0,60	X35	VERY GOOD	VERY GOOD	VERY GOOD
910126012871	100	6,5	-20 +80	0,60	X35	VERY GOOD	VERY GOOD	VERY GOOD